

Kybra

Site Protection Project – Undalup Association

July 2018



Background

Undalup Association has received a small grant from DAA to undertake site protection works at Kybra (*DAA Site ID 4882*).

The site has been desecrated by farming activities over many years.

The Kybra Heritage Complex requires urgent restoration work. The site is being impacted by weeds, erosion, waterlogging (rising water table), animals and machinery.

The Traditional owners have been doing this work over the last decade, from what they can, but need ongoing support to continue efforts.

This document is a progress report on the planning and site assessment and on-ground actions completed so far.

This report is presented for the community, funding body, and partners. A video report is also presented.



Planning and Reconnaissance

- ▶ Project Planning Workshops with Elders and other specialists
- ▶ Landowner consultation
- ▶ Field Reconnaissance Completed
- ▶ 3D Laser Imagery Scanning Completed
- ▶ Cultural safety actions and plans addressed



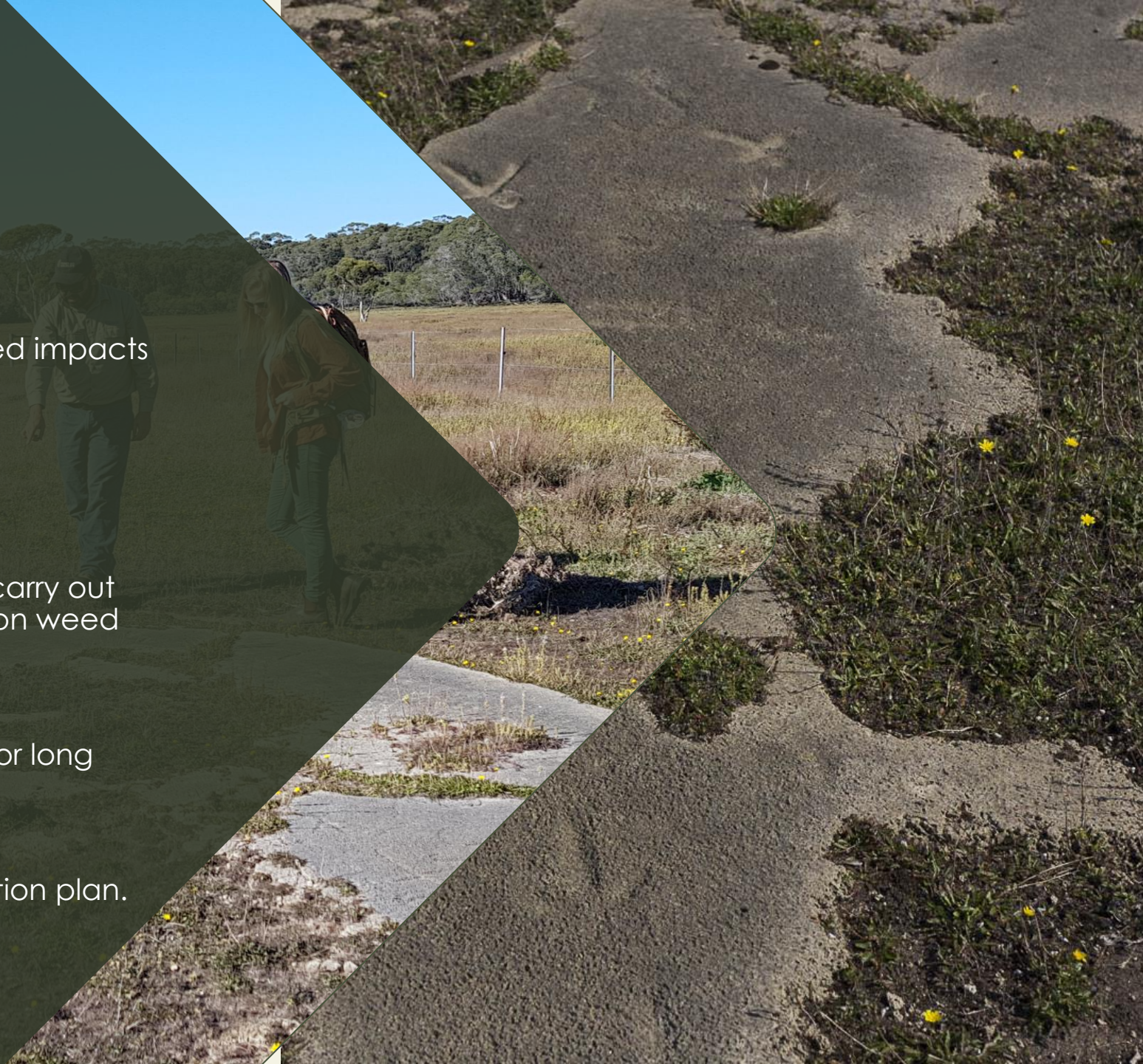
3D Laser Scanning

- ▶ The team facilitated specialist surveyor to carry out a 3D scan over the entire exposed area of rock art.
- ▶ This will ensure a highly accurate 3D model can be created from the scanned data.
- ▶ A Trimble TX8 Scanner was used that can output as a processed Mesh to an OBJ file so we can get it recreated for display and educational purposes.



Next Stages

- ▶ Community workshops to report on identified impacts and threats
- ▶ Presentation of the on-ground action plan
- ▶ Organization and planning of fieldwork to carry out any follow-up on-ground actions, focused on weed control.
- ▶ Presentation to partners and stakeholders for long term management and planning support.
- ▶ Development of project report and protection plan.



Follow up Actions

1

Develop a mini model based on 3D laser scan and discuss with Elders.

2

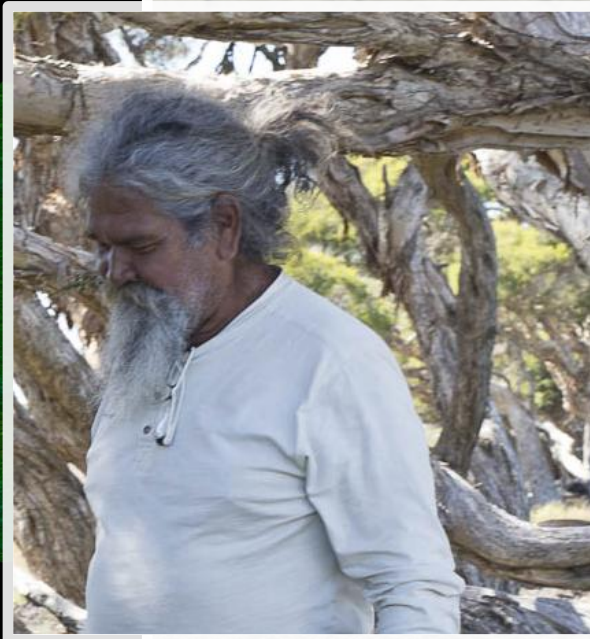
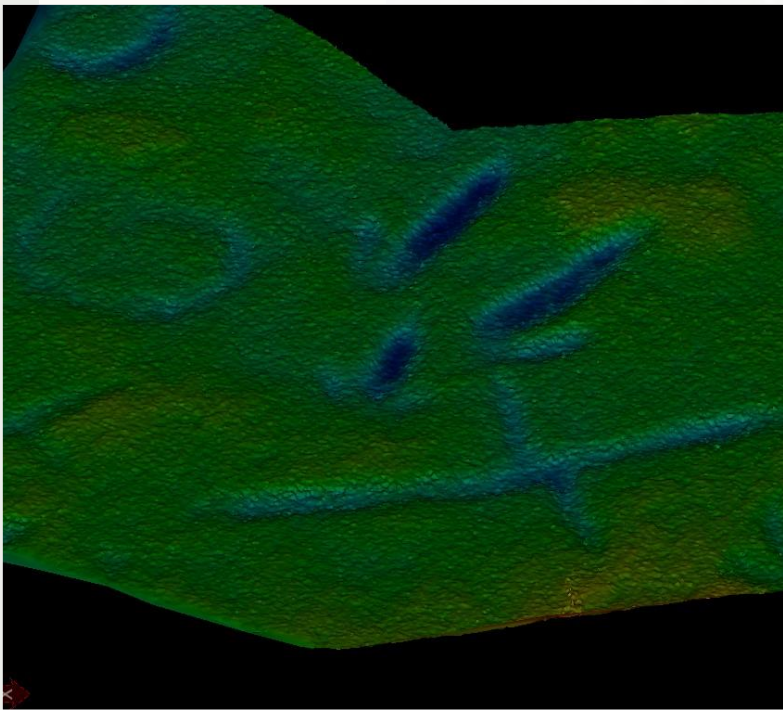
Carry out localised weed control and revegetation planning.

3

Develop site monitoring and protection plan.

4

Complete on-ground actions and 3D Model.



1

Mini-model and Discussion

- The technician kept the team up to date while making the 3D model
- Discussion was kept open as to the size, shape and design of the model





2

Weed Control and Revegetation Planning

- ▶ The team carried out on Country planning meetings to evaluate the level of work required for weeding and revegetation
- ▶ Outcomes of the planning meetings
 - ▶ Weeds are able to be hand pulled – this will be targeted before the weeds to go seed
 - ▶ Plants will be sourced that will provide partial shade and protection to the engravings – revegetation will be sensitive as roots may disrupt the engravings
- ▶ Field work will take place during a period of good weather in the winter

On Country Planning Meeting



3

Site Monitoring and Protection Plan

- ▶ The team carried out a condition assessment and developed a comprehensive protection plan for the short and long term.
- ▶ This has involved intensive planning and workshops, and consultation with partners including heritage specialists, landowners, environmental groups and NRM facilitators.
- ▶ Site monitoring is ongoing with open communication with the landowner



Threats and Impacts



Site Monitoring





4

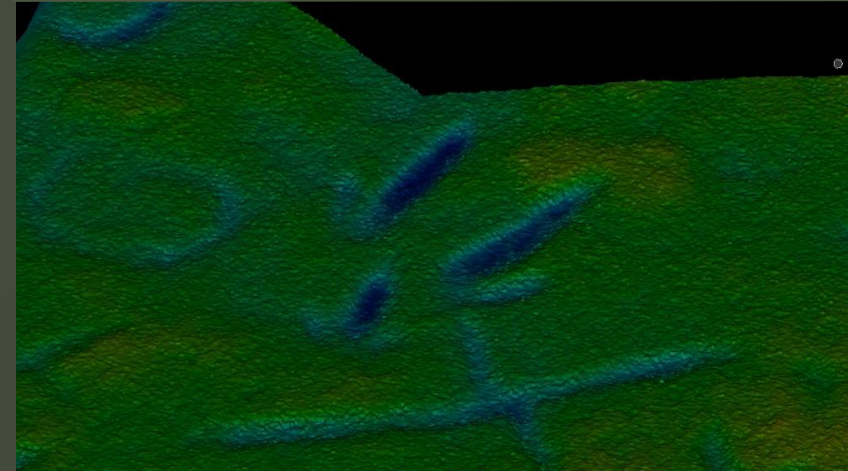
3D Model

- The 3D model is completed – one panel took 130 hours
- The model will be stored and displayed at the Undalup Association Cultural Centre in Bussleton
- It is ready for use in schools, cultural workshops, research, and interpretation.



Data for the Archives

- Importantly, we now have a complete 3D scan and survey data record of each motif.
- This means the information can be stored and used for printing at any scale at any time.
- An archival record for future printing and even for a full scale replica of the entire place, if required.



Cultural Plants Surrounding the Engraving





On-going Cultural Monitoring and Planning

- ▶ A management plan is being workshopped with community and key partners as part of an Adaptive Management strategy required for this place; that balances the structures and process of the landowner, govt agencies, NRM bodies, environmental conservation groups, and of course, the Custodians.

